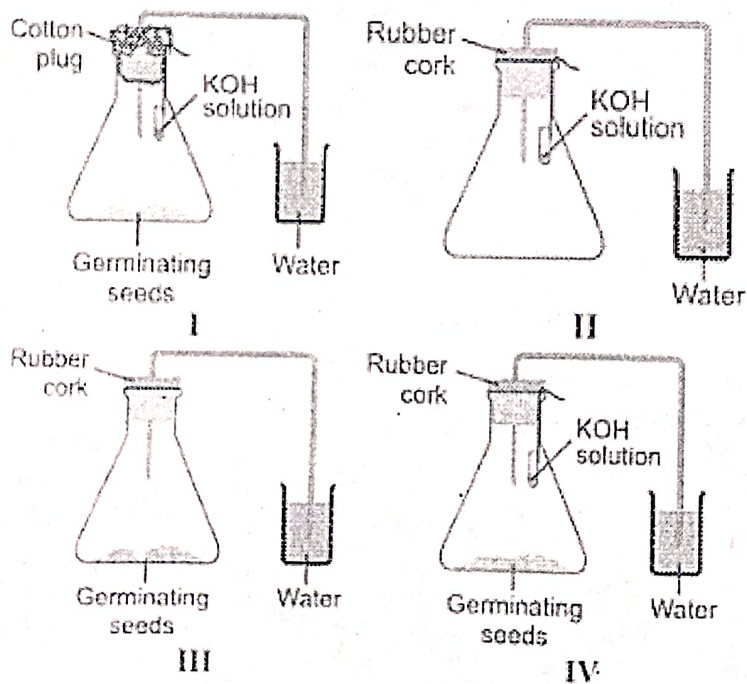


**CBSE Test Paper-01**

**Chapter 06 Life Processes**

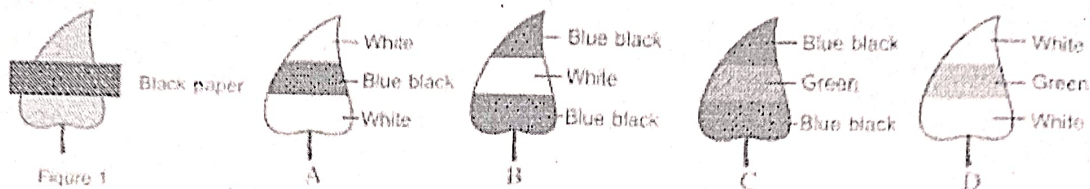
1. Instant source of energy is \_\_\_\_\_. (1)
  - a. Sucrose
  - b. Fats
  - c. Glucose
  - d. Amino acids
2. Which of the following element is essential for the formation of protein (1)
  1. N
  2. Ca
  3. Na
  4. Fe
3. Out of the four experimental set-up shown below, which one will demonstrate the evolution of carbon dioxide during respiration of germinating seeds ? (1)



- a. III
- b. II
- c. IV

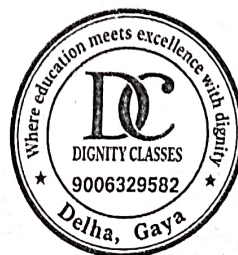
d. I

4. A leaf from a destarched plant is covered with black paper strip as shown in figure 1. The starch test is done on the leaf after 8 hours.



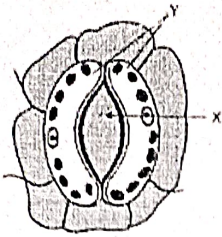
The result will be as shown in diagram. **(1)**

1. D
  2. C
  3. A
  4. B
5. To prepare a good temporary mount of the petunia leaf peel showing many stomata, the student has to get the peel from the **(1)**
1. lower surface of the leaf
  2. tip of the leaf
  3. point of attachment of the leaf to its petiole.
  4. upper surface of the leaf
6. Which are material required for setting up an experiment to show that light is necessary for photosynthesis? **(1)**
7. What is excretion? How do unicellular organisms remove their wastes? **(1)**
8. Why carbon dioxide is mostly transported in dissolved form? **(1)**
9. In which cell organelle does respiration occur? **(1)**
10. What are the end products formed during fermentation in yeast? Under what conditions a similar process takes place in our body that leads to muscle cramps? **(3)**
11. What are the components of the gastric juice? What are their functions? **(3)**
12. Why is urine more concentrated in summers? **(3)**
13. Only deoxygenated blood is pumped through a fish's heart. Is it true? Justify your answer. **(3)**
14. What are the components of transport system in human beings? What are function of these components? **(5)**
15. What is the significance of photosynthesis? **(5)**



1. Bile is secreted by **(1)**
  - a. Pancreas
  - b. Duodenum
  - c. Liver
  - d. Gall bladder
  
2. Covering with black paper strips should be tested for presence of **(1)**
  - a.  $O_2$  in leaf
  - b. Starch in leaf
  - c. Water in leaf
  - d.  $CO_2$  in leaf
  
3. Twenty dry raisins were soaked in 50 mL of water and kept for one hour at  $50^\circ C$ . Which out of the following was the correct observation? **(1)**
  - a. 10 raisins absorbed water, 10 did not
  - b. 15 raisins absorbed water, 5 did not
  - c. 8 raisins absorbed water, 12 did not
  - d. all the 20 raisins absorbed water
  
4. Which gland in the human body which secretes digestive enzymes as well as a hormone? **(1)**
  - a. Ovary
  - b. pancreas
  - c. thyroid
  - d. Testis
  
5. Four students, A, B, C and D, make the records given below, for the parts marked 'X' and 'Y' in this diagram.





Student	X	Y
A	Stoma	Guard cell
B	Guard cell	Stoma
C	Epidermal cell	Stoma
D	Stoma	Epidermal cell

The correct record, out of these, is that of student : **(1)**

- A
  - C
  - B
  - D
- Name the system responsible for transportation of materials in human body. **(1)**
  - Name thin walled air sacs of the lungs. **(1)**
  - What is mode of nutrition in fungi? **(1)**
  - Mention any three methods adopted by plants to minimise the transpiration rate. **(1)**
  - Mention the role of pancreatic enzyme. **(3)**
  - How is opening and closing of stomata regulated? **(3)**
  - How does water reach upto the leaves ? **(3)**
  - Differentiate between aerobic and anaerobic respiration. **(3)**
  - Describe the process of urine formation in kidneys. **(5)**
  - What is nutrition? Briefly explain the two major kinds of nutrition. **(5)**



## CBSE Test Paper-03

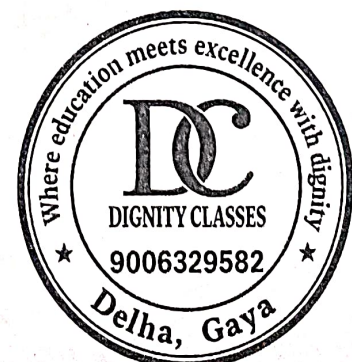
### Chapter 06 Life Processes

1. Raisins swell up after being placed them in a beaker containing water for sometime because: **(1)**
  - a. the concentration of water in the cell sap is the same as that of water in the beaker
  - b. water inside the raisins passes out of them when placed in a beaker of water
  - c. the concentration of water in the cell sap is higher than the water in the beaker.
  - d. the concentration of water in the cell sap is lower than the water in the beaker

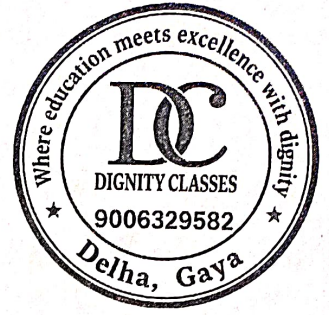
2. Match the following with correct response. **(1)**

(1) Saliva	(A) sucrose
(2) Gastric juice	(B) Pepsin
(3) Pancreatic juice	(C) Amylase
(4) Succuss entricus	(D) Trypsin

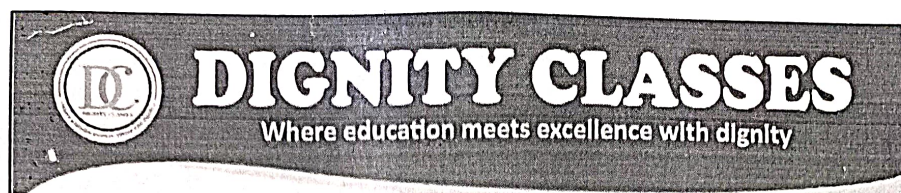
- a. 1-A, 2-C, 3-B, 4-D
  - b. 1-C, 2-B, 3-D, 4-A
  - c. 1-B, 2-D, 3-A, 4-C
  - d. 1-D, 2-A, 3-C, 4-B
3. Three students Jagdeep, Gautam and Gurdev get 10 gm raisins equally. They soaked the raisins in distilled water at room temperature. They removed the raisins after 35 minutes. 1 hour 15 minutes and 2 hours respectively. Who got more percentage absorption of water? **(1)**
    - a. Gurdev
    - b. Gautam
    - c. Jagdeep, Gautam and Gurdev
    - d. Jagdeep
  4. Which is the vestigial part of human alimentary canal? **(1)**







- a. epiglottis
  - b. pineal gland
  - c. thymus gland
  - d. Vermiform appendix
5. If the water absorbed by soaked raisins is 50% then the weight of raisins before soaking in water  $W_1$  and the weight of raisins after soaking in water  $W_2$  might have been **(1)**
- a.  $W_1 = 30\text{g}$  and  $W_2 = 50\text{g}$
  - b.  $W_1 = 50\text{g}$  and  $W_2 = 100\text{g}$
  - c.  $W_1 = 5\text{g}$  and  $W_2 = 25\text{g}$
  - d.  $W_1 = 20\text{g}$  and  $W_2 = 30\text{g}$
6. Name the exchange of gases between the blood and the air at the respiratory surface. **(1)**
7. When do viruses show movements? **(1)**
8. Which of these blood vessel carry less nitrogenous waste - renal vein or the renal artery? **(1)**
9. After drinking excess of cold drink, a person suffered from acidity. Explain? **(1)**
10. What is the advantage of four chambered of heart? **(3)**
11. The pulse rate increases due to physical exercise. Why? **(3)**
12. A girdled tree dies if the girdle is wide and is not filled up. comment. **(3)**
13. State the function of Bowman's capsule and glomerulus. **(3)**
14. Describe the structure and functioning of nephrons. **(5)**
15. Draw the diagram of part of leaf from which transpiration takes place. Explain stomatal or foliar transpiration. **(5)**

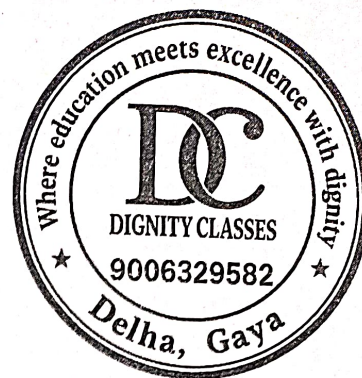
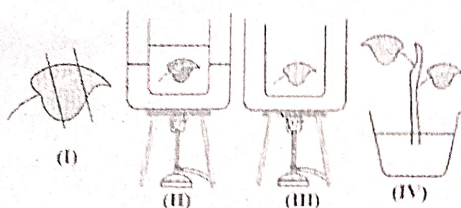


**CBSE Test Paper-04**

**Chapter 06 Life Processes**

1. Which of the following does not respire through lungs? **(1)**
  1. Duck
  2. Frog
  3. Whale
  4. Tadpole
2. An apparatus was set-up to show that germinating seeds release carbon dioxide during respiration. which observation out of the following should be made to get correct results ? **(1)**
  - a. See if the KOH in the test tube has absorbed CO<sub>2</sub> released by germinating seeds
  - b. Check the change in the level of water present in the beaker
  - c. Check if CO<sub>2</sub> is coming into the delivery tube
  - d. Carefully observe if there is any change in the size of germinating seeds
3. In the experiment to prove that light is necessary for photosynthesis, which one of the following is not required ? **(1)**
  - a. Water
  - b. KOH
  - c. Iodine
  - d. Alcohol
4. The rate of photosynthesis is maximum in **(1)**
  - a. Green light
  - b. Red light
  - c. Brown light
  - d. Yellow light
5. The figure which does not illustrate any of the steps of the experiment to show that light is necessary for photosynthesis is **(1)**





- a. I
  - b. I, II, and IV
  - c. I and III
  - d. III
6. What is the function of amylase? **(1)**
  7. What are resins and gums? **(1)**
  8. What is the quantity of blood in human body? **(1)**
  9. Write one function of valves in the walls of veins. **(1)**
  10. Differentiate between Pulmonary artery and Pulmonary veins. **(3)**
  11. How many pairs of salivary glands are there in humans ? Where do they open? **(3)**
  12. How is respiration different from breathing. **(3)**
  13. Give the chemical equation of photosynthesis. **(3)**
  14. Describe the flow of blood through the heart of human beings. **(5)**
  15. i. Draw the structure of a nephron and label the following parts on it. **(5)**
    - a. Renal artery
    - b. Bowman's capsule
    - c. Glomerulus
    - d. Collecting duct
  - ii. Name four substances in the initial filtrate which are selectively reabsorbed as the filtrate flows along the tubule.





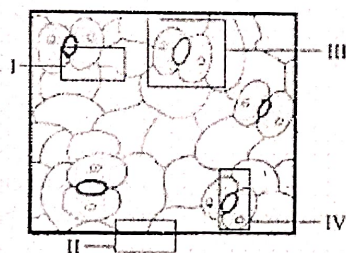
# DIGNITY CLASSES

Where education meets excellence with dignity

CBSE Test Paper-05

## Chapter 06 Life Processes

1. When air is blown from mouth into a test - tube containing lime water, the lime water turned milky due to presence of- **(1)**
  - a. water vapours
  - b. nitrogen
  - c. oxygen
  - d. carbon dioxide
2. Shown below are four parts of a slide of an epidermal peel, marked I, II, III and IV. Which part out of these four should be focused under high power to view complete stomata ? **(1)**



- a. II
  - b. III
  - c. I
  - d. IV
3. Which of the following raw material is required for photosynthesis? **(1)**
    - A. Carbon dioxide
    - B. Oxygen
    - C. Water
    - D. Hydrogen
    - a. All of these
    - b. A and B
    - c. A and D
    - d. A and C
  4. A part of de-starched leaf of a potted plant was covered with black paper strips on both sides and the plant was kept in sunlight for 8 hours. The leaf was then tested

with iodine after boiling it in alcohol. Only the uncovered part of the leaf turned blue-black. The inference is that **(1)**

- a.  $\text{CO}_2$  is necessary for photosynthesis
  - b. Light is necessary for photosynthesis
  - c. Chlorophyll is necessary for photosynthesis
  - d. Water is necessary for photosynthesis
5. Kreb's cycle is a part of **(1)**
- a. Fermentation
  - b. Anaerobic respiration
  - c. Aerobic respiration
  - d. Glycolysis
6. Name a vein the human body which carries oxygenated blood. **(1)**
7. From which kind of cells food materials enter in phloem? **(1)**
8. State one main function of Glomerulus **(1)**
9. What is the size of RBC? **(1)**
10. If a plant is releasing carbon dioxide and taking in oxygen during the day, does it mean that there is no photosynthesis occurring? Justify your Answer. **(3)**
11. Give an account of small intestine. **(3)**
12. Discuss the path of ascent of sap. **(3)**
13. List various functions of food. **(3)**
14. Write the summary of oxygen transport in the body. **(5)**
15. Explain role of stomata in exchange of gases in plants. **(5)**

